

Lempster Mountain Wind Power Project

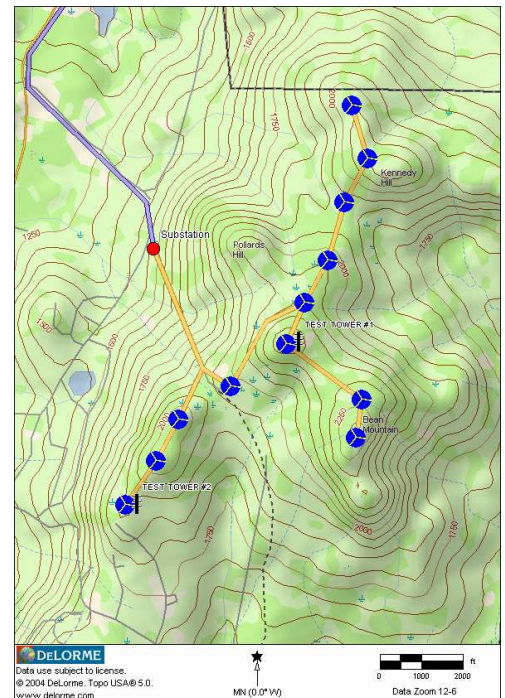
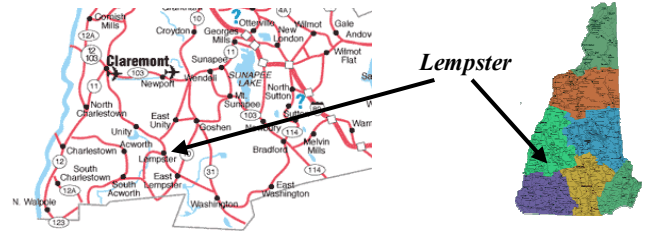


The Lempster Mountain Wind Power Project, currently under development in southwestern New Hampshire, is owned by Iberdrola Renewable Energies, the world's largest owner and operator of wind farms. Iberdrola USA is a Pennsylvania-based wind energy developer and marketer. Iberdrola sites and develops new wind farms, and markets clean energy production from new and existing wind farms to both residential and commercial customers throughout the U.S.



Project Details

- **Location:** Lempster, New Hampshire (Sullivan County); about 20 miles north of the city of Keene and 5 miles to the southwest of Mount Sunapee. The project will lease privately-owned lands.
- **Size:** 24 Megawatts (MW) in size (rated capacity); Annual production of over 70,000 megawatt hours (MWh) of clean, emission-free, fuel-free energy - enough to provide power to 10,000-12,000 homes.
- **Equipment:** 12 state-of-the-art Gamesa G87 wind turbine generators: 2.0 MW capacity each.
- **Regional Electricity:** project will connect to the regional power grid through the Public Service of New Hampshire (PSNH) system.
- **Project start date:** Construction start planned for 2007 with operation commencing in 2008.



For information, contact: Edward Cherian
603.440.3127
echerian@iberdrolausa.com

