



Jordanville Wind LLC
480 Broadway, Suite 218
Saratoga springs, NY 12866

January 29, 2007

Attention: Mr Skip Brennan

Subject: Impact of proposed turbine relocations at Jordanville Wind Project

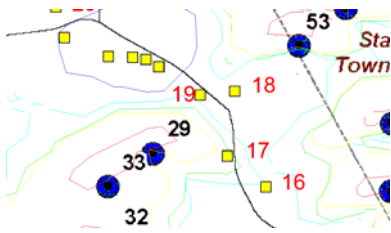
Dear Mr. Brennan

I understand that Jordanville Wind is proposing to move five turbines and would like an assessment of the impacts these relocations would have on the shadow impacts on the houses in the project vicinity.

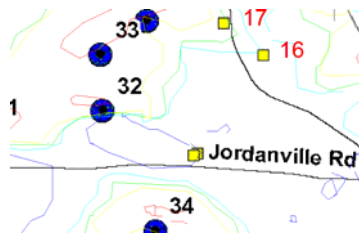
Table 1 below lists the turbines and the relative relocations (distances and directions) Jordanville provided me. The impact of these proposed moves in relation to the shadow impacts shown in the “Jordanville Wind Project Shadow Impact Assessment v9” issued by Superna Energy in October 2006 are provided in column 3. The figures on the next page provide views of the listed turbines and the shadow impact curves from the above report.

Turbine #	Proposed Move	Impacts
#29	36 feet west and 286 feet south	This will reduce the amount of shadow impact on house #17
#32	401 feet west and 84 feet north	This will have no noticeable effects on any of the residences in the project vicinity
#40	324 feet east and 7 feet north	This will have no noticeable effects on any of the residences in the project vicinity
#76	199 feet west and 2 feet north	This will marginally reduce the amount of shadow impact on house #14
#87	14 feet east and 193 feet north	This will reduce the amount of shadow impact on house #35

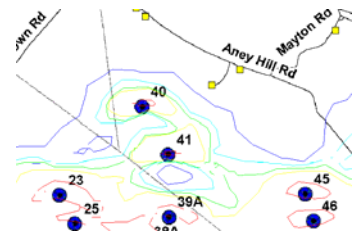
Table 1: Proposed turbine relocations and the associated changes in the shadow impact



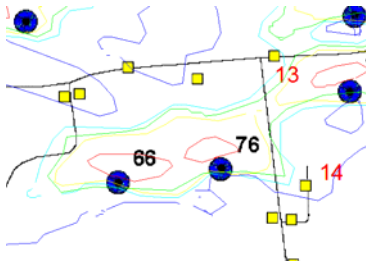
Turbine #29



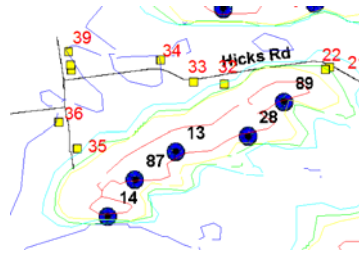
Turbine #32



Turbine #40



Turbine #76



Turbine #87

Yours truly,

Lloyd Pasley
Superna Energy LLC